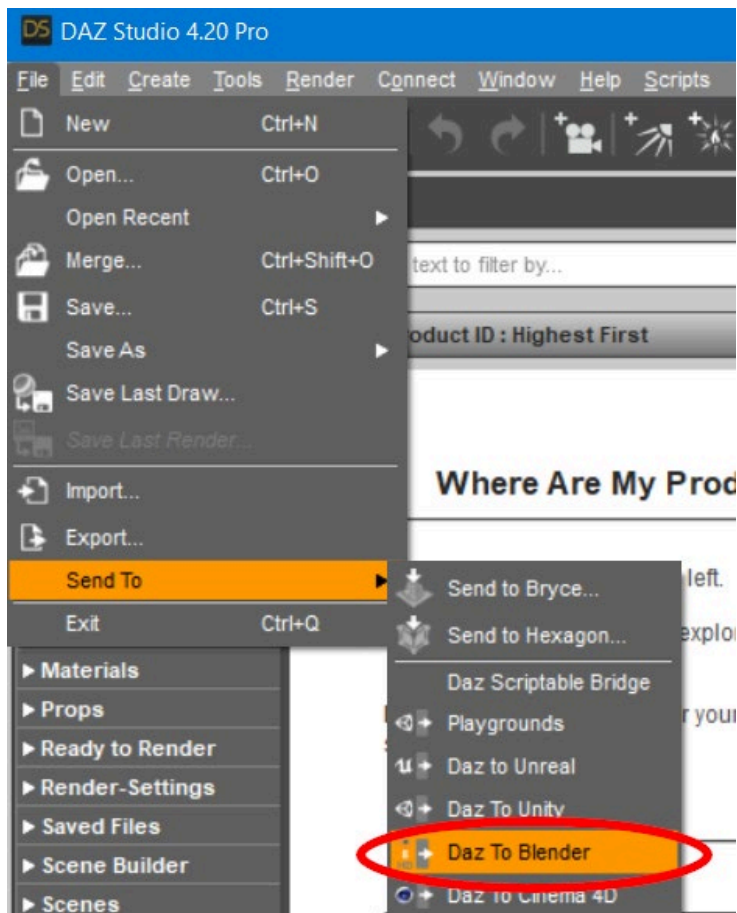


How to Install Daz to Blender 2022

Daz Studio

- You can install the Daz To Blender Bridge automatically through the Daz Install Manager or Daz Central. This will automatically add a new menu option under File -> Send To -> Daz To Blender.

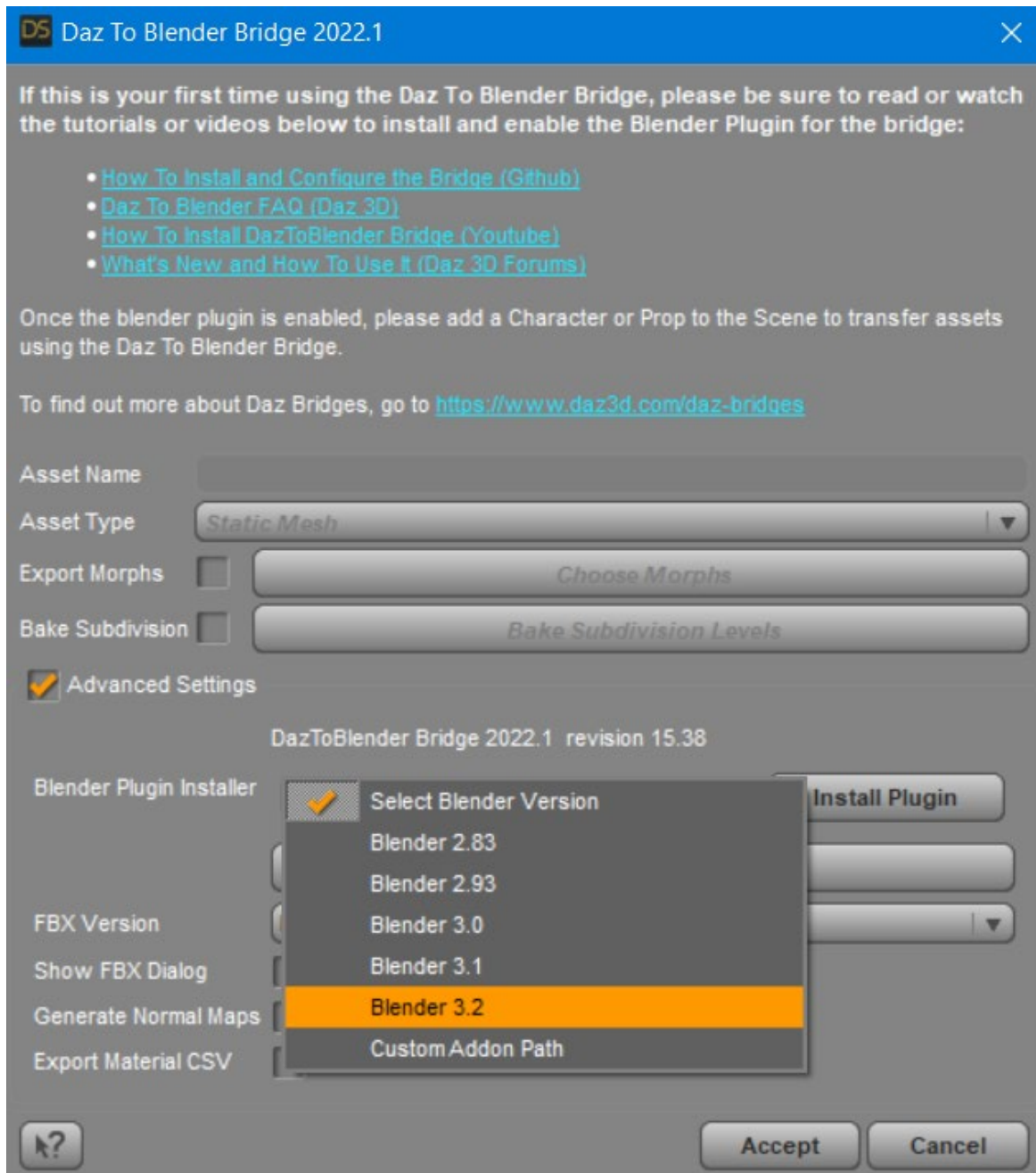


- Alternatively, you can manually install by downloading the latest build from Github Release Page and following the instructions there to install into Daz Studio.

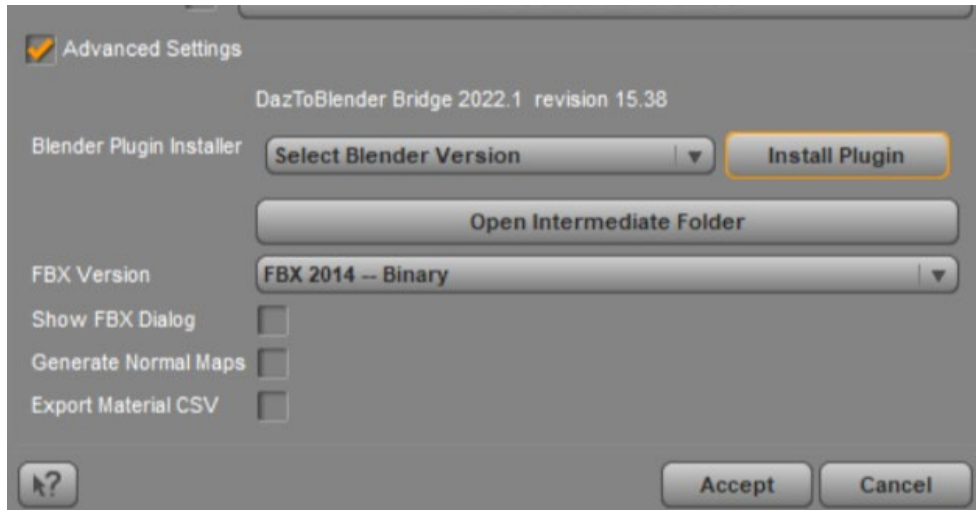
Blender

1. The Daz Studio Plugin now comes embedded with an installer for Blender. From the Daz To Blender Bridge Dialog, there is now section in the Advanced Settings section for Installing the Blender Plugin.

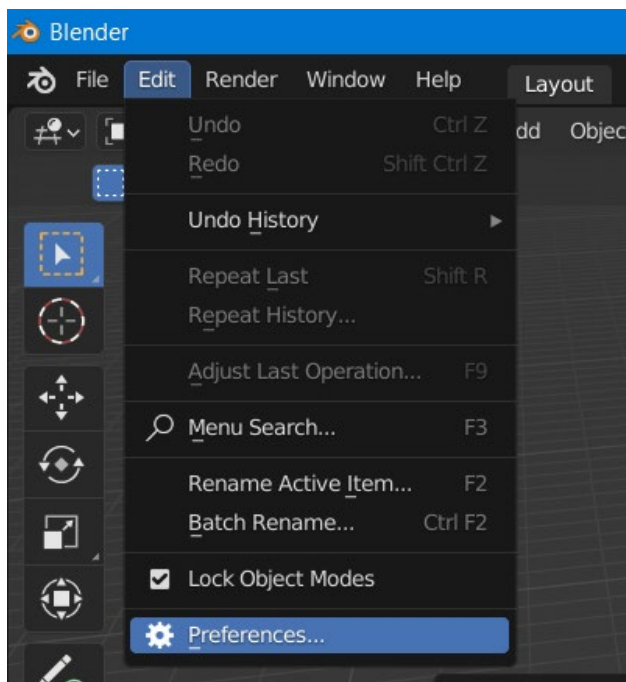
2. Select your Blender Version from the drop down menu. If your Blender version is not directly supported by this drop-down or you have a custom plugins folder, then select "Custom Addon Path".



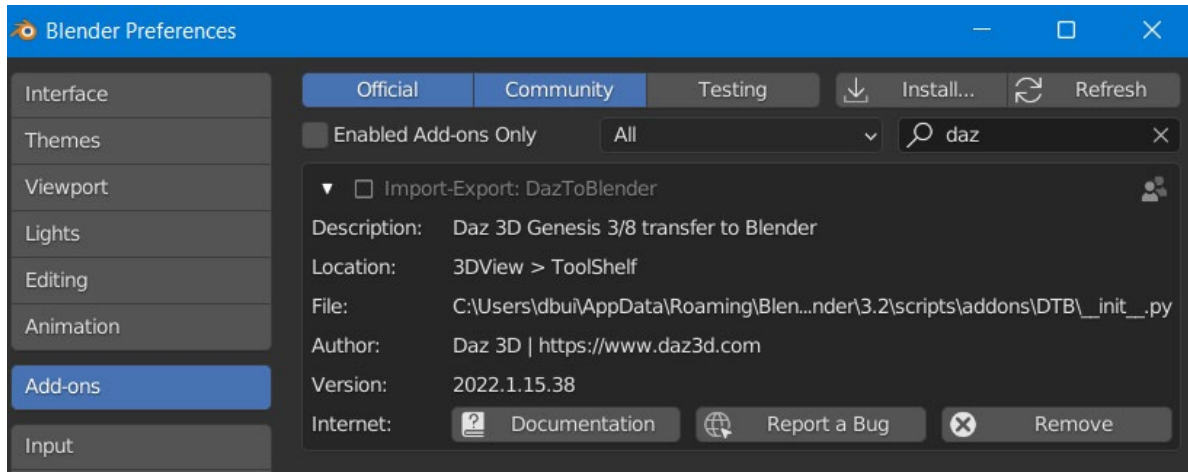
3. Then click the "Install Plugin" button. If you selected a supported version of Blender, you should see a popup dialog box confirming if the Blender plugin was successfully installed for your version of Blender. Be sure to restart Blender after installing the Blender Plugin.



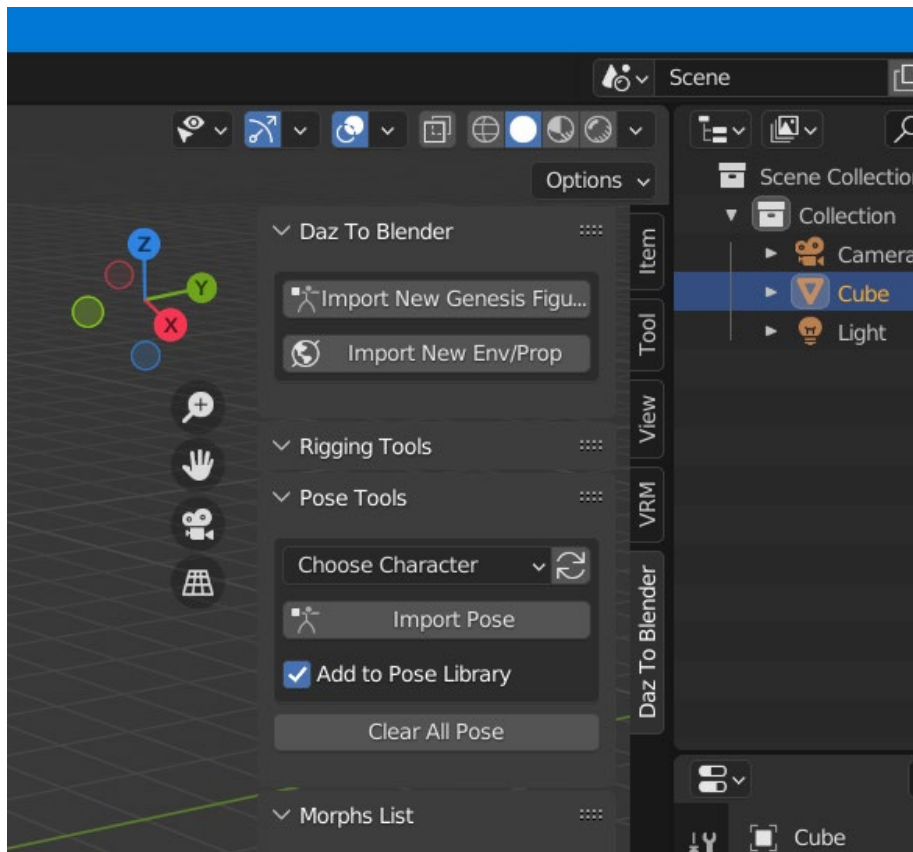
4. From Blender, open the Blender Preferences window by selecting Edit -> Preferences from the Blender main menu.



5. In the Blender Preferences window, click on the Addons button found along the left side of the window.
6. Scroll down the list of add-ons, and look for "Import-Export: DazToBlender". Check the box next to "Import-Export: DazToBlender" to enable the plugin.



7. A DazToBlender tab should now appear on the Blender "Tool-shelf" which are a set of vertical tabs along the right edge of the Blender viewport window.



The following steps are for people who wish to use the "Custom Addon Path" installation option.

1. If you chose "Custom Addon Path", you will see a window popup to choose a custom Scripts or Addons folder. The starting folder path will be the location where Blender stores preferences and files for each version of Blender.

2. If you are using an unsupported version of Blender, you should see a subfolder corresponding to your version from the starting folder path. Open that folder and select the scripts folder. Then click "Select Folder".
3. If you have configured a custom Scripts path from the Blender Preferences window, then you may navigate to that folder and click "Select Folder". You will then see a confirmation dialog stating if the plugin installation was successful.